



SUSTAINABILITY REPORT 2023

Reporting Period: 1 Jan. - 31 Dec., 2023

可持续发展报告2023

报告期：2023年1月1日 - 12月31日

Dear Readers: 致读者:

At KRAIBURG Rubber (Suzhou) Co., Ltd., sustainability is core to our values and operations. By joining the United Nations Global Compact, we commit to upholding principles in human rights, labor standards, environmental protection, and anti-corruption, aligning our efforts with the UN Sustainable Development Goals. This builds on our ISO 14001 certification and deepens our dedication to responsible, impactful business practices.

In this report, we share our progress in energy efficiency, water conservation, and waste reduction, as well as our vision for continuous improvement. I am proud of our team's dedication and excited about the future we are building together.

Thank you for your interest in our journey.

Warm regards,



General Manager
KRAIBURG Rubber (Suzhou) Co., Ltd.



Jacques Swalen
GM

在克莱伯格橡胶(苏州)有限公司,可持续发展始终是我们核心价值观和运营理念的重要组成部分。通过加入联合国全球契约,我们承诺践行人权、劳动标准、环境保护和反腐败等原则,并将我们的努力与联合国可持续发展目标(SDGs)相结合。这一承诺进一步强化了我们在ISO 14001认证基础上对社会责任和可持续影响的深远践行。

在本报告中,我们详细分享了在提升能源效率、加强水资源管理、减少废弃物产生等方面取得的进展,同时展望了未来持续改进的方向。我为团队的奉献精神深感自豪,并对我们共同创造的美好未来充满信心和期待。

感谢您关注我们在可持续发展道路上的努力与进步。

诚挚问候,



总经理
克莱伯格橡胶(苏州)有限公司



CONTENTS 目录

- 05 | Forword
前言
- 06 | Company Profile
公司简介
- 07 | Our Approach to Sustainability
我们的可持续发展战略
- 08 | Materiality and Stakeholder Engagement
实质性议题及利益相关方参与
- 09 | Ecology
生态
 - 09 | Water Management 水资源管理
 - 13 | Waste Management 废弃物管理
 - 19 | Circular Economy Initiatives 循环经济倡议
 - 20 | Climate Change 气候变化
- 24 | Social Responsibility
社会责任
 - 24 | Workforce Management 劳动力管理
 - 26 | Community Engagement 社区参与
- 27 | Economic Responsibility
经济责任
 - 27 | Ethical Business Practice 道德商业实践
- 28 | Future Goals & Roadmap
未来目标与路线图
- 28 | Data & Assurance
数据与保证

Figure Contents 图片目录

- 05 | Figure 1: Our Sustainability Efforts | 图表1: 我们的可持续发展努力
- 07 | Figure 3: ESRS in a Nutshell | 图表3: ESRS 标准简介
- 07 | Figure 2: Our Sustainability Strategy | 图表2: 我们的可持续发展战略
- 08 | Figure 4: Materiality Matrix of the KRAIBURG Group | 图表4: 克莱伯格集团实质性矩阵
- 08 | Figure 5: Our Stakeholders | 图表5: 我们的利益相关方
- 10 | Figure 6: Water Consumption Waste Water Production Usage | 图表6: 水消耗、废水和生产用量
- 11 | Figure 7: Water Testing Content | 图表7: 水质检测内容
- 15 | Figure 8: Waste Management Procedures | 图表8: 废弃物管控程序
- 16 | Figure 10: Data on Waste Definition and Treatment | 图表10: 基于废弃物定义和处理方法的统计
- 16 | Figure 9: 2023 Total Production Output vs Waster | 图表9: 2023年总产量与废弃物对比
- 17 | Figure 11: Total Hazardous Waste Disposal & Cost | 图表11: 危险废弃物总处置量及成本
- 22 | Figure 12: GHG Emission Data | 图表12: 温室气体排放数据
- 22 | Figure 13: GHG Protocol | 图表13: 温室气体核算协议
- 22 | Figure 14: Energy Mix | 图表14: 能源组合
- 23 | Figure 15: Emissions Reduction (GHG SCOPE 1+2) & Renewable Energy Share (2021-2023)
图表15: 温室气体减排(温室气体范围1+2)与可再生能源占比(2021-2023)
- 25 | Figure 16: Performance Metrics & Targets | 图表16: 绩效指标与目标

Forword

前言

As a technical leader in rubber compound production, KRAIBURG Rubber (Suzhou) Co., Ltd. is committed to creating a more sustainable future. Since 2005, we have prioritized responsible manufacturing, minimized our environmental impact, and focused on the success of our customers.

In our second year of engagement with EcoVadis, we are deepening our commitment to transparent, responsible, and sustainable practices. This report highlights milestones achieved, areas of focus, and a roadmap for continued progress. It also captures our progress toward EcoVadis sustainability goals and our alignment with the UN Sustainable Development Goals (SDGs) (see Figure 1), as we work to enhance our environmental, social, and economic impact through strategic actions and partnerships.

This report covers our sustainability performance and initiatives for the period from January 1 to December 31, 2023. Data collection and report preparation were completed by December 2024. While the focus remains on 2023, future plans and initiatives are included to provide a comprehensive view of our sustainability journey.

作为橡胶混炼胶生产领域的技术专家，克莱伯格橡胶(苏州)有限公司始终致力于推动更加可持续的未来。自2005年成立以来，我们始终将负责任的生产放在首位，努力减少对环境的影响，并始终专注于支持客户的成功。

进入参与EcoVadis的第二年，我们进一步深化了对透明、负责任和可持续发展的承诺。本报告重点展示了我们已取得的关键成果、关注的核心领域以及未来持续改进的路线图。同时，报告也详细阐述了我们在EcoVadis可持续发展目标上的进展，以及与联合国可持续发展目标(SDGs)的紧密对齐(见图表1)，体现了我们通过战略行动与合作提升环境、社会和经济影响的持续努力。

本报告涵盖了我们2023年1月1日至12月31日期间的可持续发展绩效和举措。数据收集和报告编制工作于2024年12月完成。虽然报告的重点仍然是2023年，但同时也包括未来的计划和举措，以全面展示我们的可持续发展之旅。

WE SUPPORT



Figure 1: Our Sustainability Efforts | 图表1: 我们的可持续发展努力

Company Profile

公司简介



As an independent entity under KRAIBURG Holding SE & Co. KG, KRAIBURG Rubber (Suzhou) Co., Ltd. was established in 2005 to provide specialized rubber compounds. Originating from Bavaria, Germany, our company follows German standards, with a strong development team helping customers gain competitive advantages through tailored rubber solutions. In 2020, in response to market demand and our expertise, we launched KRAIWEAR®, our first rubber compound brand for wearables.

Founded in 1947, KRAIBURG has grown into a leading rubber industry specialist with over ten sister companies worldwide providing solutions for diverse applications, offering custom compounds to meet each unique need. KRAIBURG's success rests on high-quality products, customer-centric service, and continuous innovation, upheld by excellence in development, processing, and technical support.

克莱伯格橡胶(苏州)有限公司成立于2005年,作为克莱伯格集团总公司的独立子公司,专注于提供高品质的特种橡胶混炼胶。公司起源于德国巴伐利亚,秉承德国标准,凭借一支强大的研发团队,为客户量身打造橡胶解决方案,助力客户在竞争中脱颖而出。2020年,我们顺应市场需求,结合专业技术,推出了首个专注于可穿戴市场的橡胶品牌——KRAIWEAR®。

克莱伯格控股成立于1947年,现已成长为全球领先的橡胶行业专家,旗下拥有十余家姐妹公司,致力于为多样化应用提供创新解决方案,并根据客户需求量身定制产品。克莱伯格的成功基于高质量的产品、以客户为中心的服务和持续的技术创新,这些成就得益于卓越的研发能力、先进的加工工艺和全面的技术支持。



Our Approach to 我们的可持续发展战略

Our sustainability strategy is founded on three core pillars: Ecology, Economy, and Social Responsibility (see Figure 2), aligned with the European Sustainability Reporting Standards (ESRS) standards (E1, E2, E5, S1, and G1) (see Figure 3), EcoVadis assessment criteria, and key SDGs. This approach emphasizes our commitment to minimizing environmental impact, supporting our workforce, and promoting responsible economic growth.

我们的可持续发展战略建立在生态、经济和社会责任三大核心支柱之上(见图表2),与欧洲可持续发展报告标准(ESRS)的E1、E2、E5、S1和G1要求(见图表3)、EcoVadis评估标准以及关键联合国可持续发展目标(SDGs)高度一致。该战略充分体现了我们在降低环境影响、支持员工福祉和推动负责任经济增长方面的承诺。通过持续改进,我们确保自身实践符合全球标准,同时积极践行ESRS和EcoVadis的核心要求。

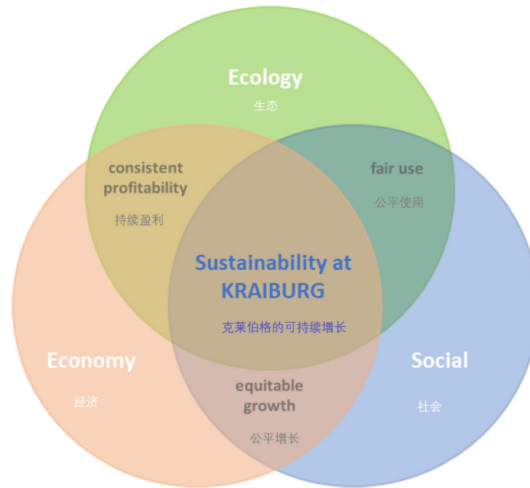


Figure 2: Our Sustainability Strategy | 图表2: 我们的可持续发展战略



Figure 3: ESRS in a Nutshell | 图表3: ESRS 标准简介

Materiality and Stakeholder Engagement

实质性议题及利益相关方参与

To ensure our sustainability efforts meet the priorities of our stakeholders, we conducted a Materiality Assessment to identify the most critical areas. Key stakeholder priorities include environmental impact reduction, fair labor practices, and responsible business conduct. Based on this assessment, our sustainability strategy prioritizes water conservation, waste reduction, and climate action, along with social responsibility and transparency (see Figure 4 & 5).

为了确保我们的可持续发展工作契合利益相关方的核心关注点,我们开展了实质性评估,以明确最重要的优先领域。评估结果表明,利益相关方的主要关注点包括降低环境影响、公平劳动实践以及负责任的商业行为。

基于这一评估,我们的可持续发展战略聚焦于水资源保护、废弃物减少、气候行动,以及社会责任与透明度的提升(见图表4和5)。

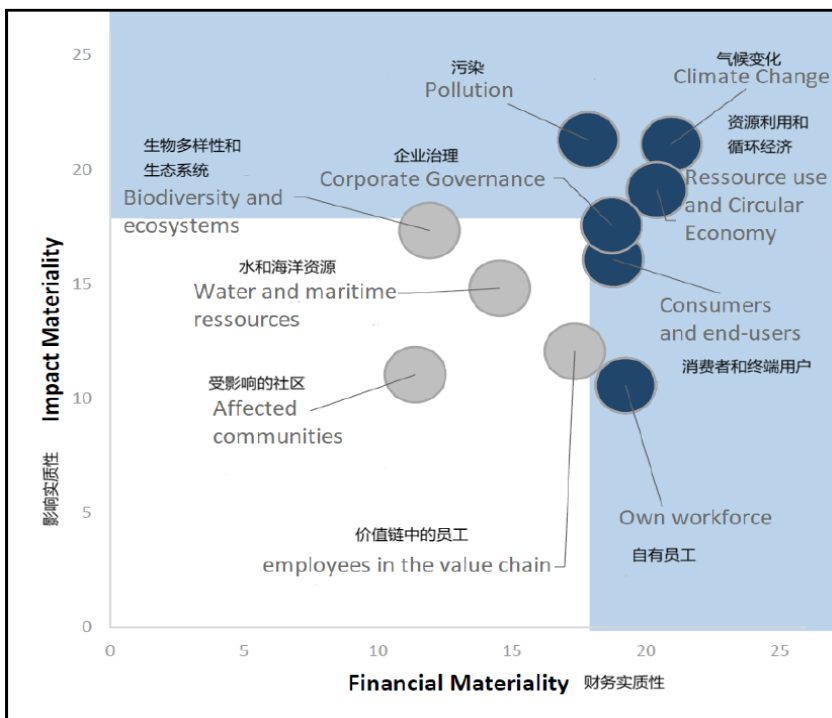


Figure 4: Materiality Matrix of the KRAIBURG Group | 图表4: 克莱伯格集团实质性矩阵

Customers 客户	Customer surveys and visits/客户调查和拜访 Technical support and forums/技术支持/论坛
Suppliers 供应商	Supplier review and audit/供应商审核 Supplier regular meetings/定期会议
Employees 员工	Regular meetings/定期会议 Satisfaction survey and feedback/满意度调查和反馈 Training/培训 Team-building activities/团建活动

Figure 5: Our Stakeholders | 图表5: 我们的利益相关方

As a rubber compound manufacturer based in China with a parent enterprise in Germany, our water management practices align with the European Sustainability Reporting Standards (ESRS E3: Water and Marine Resources).

作为一家位于中国的橡胶混炼胶制造商，我们的水资源管理实践严格遵循欧洲可持续发展报告标准 (ESRS-E3:水和海洋资源) 的要求，体现了我们对可持续水资源利用的承诺。

Our main objectives

- Minimize water consumption in production & other usage.
- Continuously monitor and reduce wastewater and hazardous wastewater quantity.
- Take proactive initiatives to ensure compliance with local water laws.
- Improve water measurement and take preventative action.

我们的核心目标

- 最大限度减少生产及其他用途中的水资源消耗。
- 持续监测并降低废水和危险废水的排放量。
- 积极采取措施，确保严格遵守当地水资源法规。
- 提高水资源测量的精确性，并实施预防性管理措施。

Actions

- May 2022: Exchange of existing cooling towers including automatic fan control.
- Sep. 2022: Exchange of existing chiller with high cooling efficiency.
- Oct. 2022: Completion of all toilet renovations to reduce water leakage and water consumption during flushing.

措施

- 2022年5月:更换现有冷却塔,包含自动风扇控制系统。
- 2022年9月:更换现有冷水机,以提高冷却效率。
- 2022年10月:完成所有洗手间的翻新,以减少水泄漏和冲水时的水消耗。

Future initiatives

- Jan 2024: Installation of new water flow meters to detect water evaporation in the cooling water system.
- June 2024: Installation of a shut-off valve in the rainwater well to prevent polluted rainwater from exiting the factory.

未来行动

- 2024年1月:安装新的水流量计,以检测冷却水系统中的水蒸发情况。
- 2024年6月:在雨水井中安装截止阀,以防止污染的雨水流出工厂。



Water Sources, Consumption & Wastewater

Our sole water source is the local water plant, SIP Hua Yan Water, leading to closely matched figures for water withdrawal and discharge. As a result, we do not have access to rainwater, surface water, or groundwater. We have been striving to control water consumption and usage for production at the lowest feasible levels since 2019 (See Figure 6). Due to the Covid situation, more water was used for cleaning purposes in 2021 and 2022.

水源、消耗与废水

我们的唯一水源为苏州工业园区华衍水务提供的市政供水, 因此取水量与排水量数据基本一致。我们不会利用雨水、地表水或地下水资源。自2019年以来, 我们始终致力于将生产用水量控制在可行的最低水平(见图表6)。然而, 受新冠疫情影响, 2021年和2022年的清洁用水量有所增加。

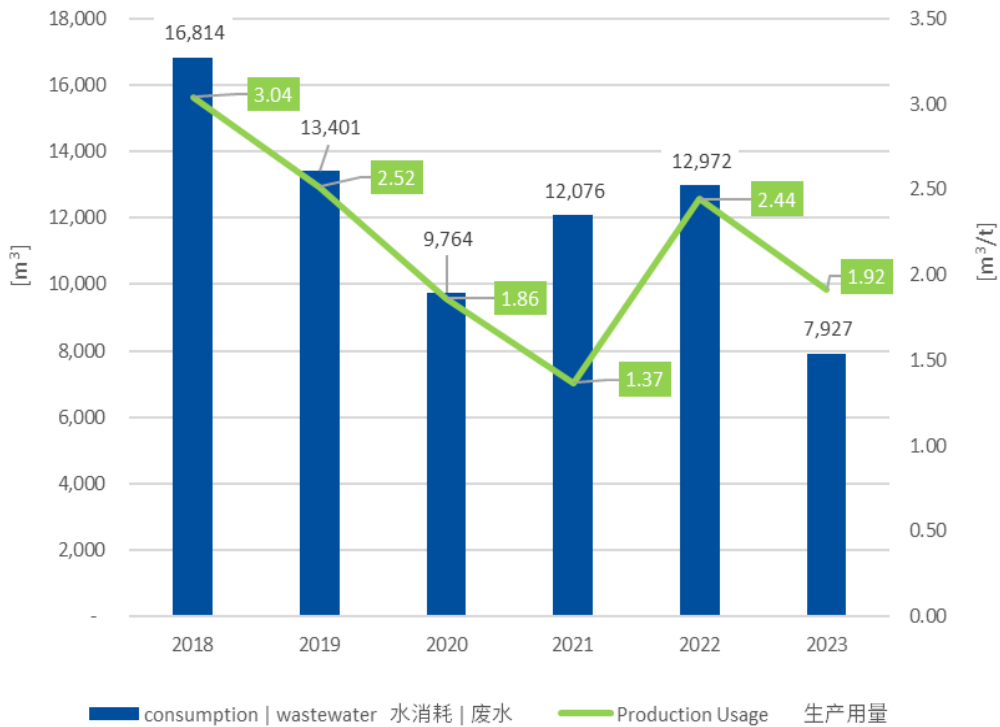


Figure 6: Water Consumption Waste Water Production Usage | 图表6:水消耗、废水和生产用量

Monitoring and Measurement

To improve water management, we planned to install new water flow meters to monitor evaporation from the cooling towers for production in 2024.

监测与测量

为进一步优化水资源管理,我们计划于2024年安装新型水流量计,用于监测生产冷却塔中的水蒸发情况。

Wastewater Management

All our wastewater is discharged to a municipal sewage treatment plant by SIP Hua Yan Water. Hazardous wastewater is treated by certified third parties (see Figure 8). Despite surface and groundwater pollution not being applicable concerns for us (approximately 0.25% in 2022; 0.24% in 2023), we conduct annual wastewater tests through third party assessments to understand pollutant emissions and ensure compliance with regulations and laws.

废水管理

我们所有的废水均由苏州工业园区华衍水务排入市政污水处理厂,而危险废水则交由资质齐全的第三方进行处理(见图表8)。尽管地表水和地下水污染并非是我们的主要问题(2022年占比约为0.25%;2023年约为0.24%),我们仍每年通过第三方评估对废水进行检测,以了解污染物排放情况并确保符合相关法规和法律要求。

Time 时间	Water Testing Content 水质检测内容	Result 结果
Jul-22	Domestic sewage: pH value, chemical oxygen demand, suspended matter concentration, ammonia nitrogen, total phosphorus, and total nitrogen 生活污水: pH 值、化学需氧量、悬浮物浓度、氨氮、总磷和总氮浓度	Comply 合格
Apr-23	Groundwater: pH value, total arsenic, fluoride (fluoride ion), petroleum hydrocarbons (C10-C40) 地下水: pH 值、总砷、氟(氟离子)、石油烃(C10-C40)	
Aug-23	Domestic sewage: pH value, chemical oxygen demand, suspended matter concentration, ammonia nitrogen, total phosphorus, and total nitrogen 生活污水: pH 值、化学需氧量、悬浮物浓度、氨氮、总磷和总氮浓度	

Figure 7: Water Testing Content | 图表7:水质检测内容

Environmental Collaboration

Located at No. 166, Suhong East Road, Suzhou Industrial Park, we primarily produce rubber compounds. Our factory meets the requirements of land use planning and does not involve the “three zones and three lines” (urban space, agricultural space, ecological space, urban development boundary, permanent basic farmland, and ecological protection red line). We prioritize collaboration with the local government to ensure water quality and prepare emergency response plans for environmental incidents, including water and groundwater pollution. Specialized training on emergency plans is arranged every year.

Sustainable Water Management

Our water management practices adhere to ESRS E3 standards, with a focus on minimizing water consumption, enhancing wastewater handling, and ensuring compliance with local laws. Significant upgrades, such as automated cooling tower fans and high-efficiency chillers, support these goals. By 2025, we aim to further reduce water consumption through advanced monitoring systems and conservation measures.

环境协作

我们位于苏州工业园区苏虹东路166号，专注于橡胶混炼胶的生产。我们的工厂严格遵守土地利用规划要求，不涉及“三线三界”（即城镇空间、农业空间、生态空间、城镇开发边界、永久基本农田和生态保护红线）。我们始终优先与当地政府合作，确保水质安全，并制定了环境事件（包括水体和地下水污染）的应急响应计划。此外，每年都会组织专项应急计划培训，以提升响应能力。

可持续水资源管理

我们的水资源管理实践严格遵循ESRS-E3标准，着重于降低水资源消耗、强化废水处理，并确保完全符合当地法规。通过自动冷却塔风扇和高效冷水机等关键升级，我们进一步支持了这些目标的实现。展望未来，我们计划在2025年前引入先进的监测系统和节水措施，以进一步减少水资源的使用。



KRAIBURG Rubber (Suzhou) is committed to responsible resource management and the implementation of resource use and circular economy (ESRS E5) principles throughout its operations. This commitment is reflected in our efforts to minimize waste generation, maximize resource efficiency, and promote sustainable practices across our value chain.

Our main objectives

- Focus on sustainable use of available resources.
- Waste Minimization: We actively reduce waste through recycling, reuse initiatives, and the adoption of renewable energy sources like solar power. Continuous employee training fosters awareness on material waste reduction, energy conservation, and efficient production techniques. Additionally, we promote responsible usage of resources, such as collecting waste separately.
- Recycling and Recovery: Waste materials such as scrap rubber, packaging and so on are systematically collected, sorted, and sent to authorized recycling facilities for proper processing and recovery.
- Legal Compliance: The company complies with all relevant waste management regulations and requirements set forth by Suzhou Industrial Park.
- Data Monitoring and Reporting: We enhance data collection and reporting mechanisms to better track waste generation, recycling rates, and overall environmental performance.

克莱伯格橡胶(苏州)致力于在整个运营中实施资源利用和循环经济(ESRS-E5)原则,实现负责任的资源管理。我们的承诺体现在减少废弃物产生、最大化资源效率以及在价值链上推广可持续实践的努力中。

我们的核心目标

- 专注于优化现有资源的使用,推动可持续发展。
- 可持续利用资源:通过回收、再利用以及使用太阳能等可再生能源,积极减少废弃物的产生。通过持续的员工培训,提升对减少材料浪费、节能和高效生产技术的意识。同时,提倡负责任地使用资源,例如进行废弃物分类和收集。
- 回收与再利用:对废料(如废橡胶和包装材料等)进行系统化收集和分类,送至授权回收设施进行妥善处理 and 再利用。
- 法律合规:严格遵守苏州工业园区所有相关废弃物管理法规和要求,确保运营合法合规。
- 数据监控与报告:强化数据收集和报告机制,精准追踪废弃物的产生情况、回收率以及整体环境绩效,以推动持续改进。



Actions

- 2022:
 1. Installation of a solar roof system as a climate resilience solution.
 2. Improve the data monitoring and reporting by changing the waste forwarders and simplifying the waste categories.
- 2023:
 1. Replacement of traditional lighting with sensor-controlled smart lighting to conserve energy.
 2. Installation of insulating glass systems to reduce energy consumption further.
 3. Exhaust system modification for production lines.
 4. Information about hazardous waste is reported at the government system, where after the weight information are uploaded and the labels are be printed for disposal arrangement with the recyclers.

Future initiatives

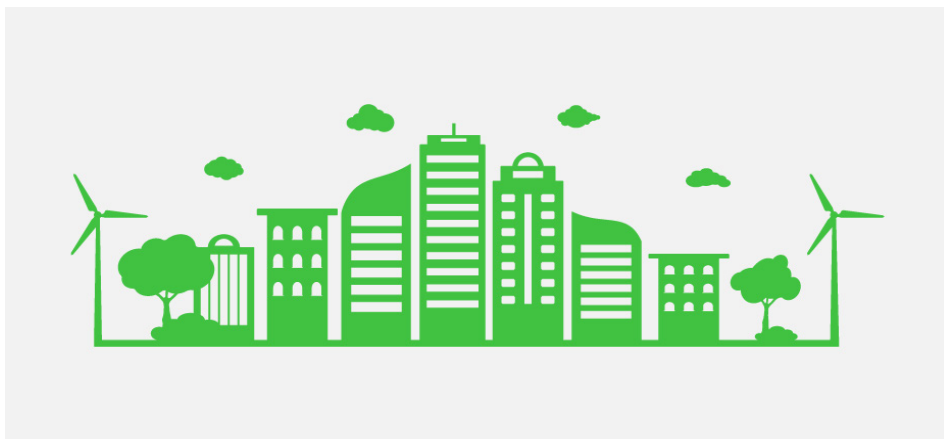
- On-going: Collaboration with suppliers and customers to utilize recyclable packaging materials.
- 2025: Installation of an additional solar roof system as a climate resilience solution.

措施

- 2022年:
 1. 安装太阳能屋顶系统,以增强气候韧性。
 2. 更换废弃物运输商,优化废弃物分类流程,提升数据监控与报告的效率。
- 2023年:
 1. 用传感器控制的智能照明替换传统照明系统,以实现能源节约。
 2. 安装隔热玻璃系统,以进一步降低能源消耗。
 3. 改造生产线的排气系统,提升能源效率。
 4. 将危险废弃物相关信息上传至政府系统,在输入重量数据后打印标签,并协调回收商进行处理。

未来行动

- 持续进行:与供应商和客户合作,使用可回收包装材料。
- 2025年:安装额外的太阳能屋顶系统,以助力气候韧性。



Waste Management and Circularity

To maintain ecological balance and minimize environmental impact, KRAIBURG Rubber (Suzhou) has implemented comprehensive waste control and management procedures (see Figure 9). These procedures define the responsibilities of different departments for waste collection, sorting, temporary storage, and disposal. Regular training sessions are conducted to enhance the management of solid and liquid waste in line with our commitment to resource optimization and circular economy principles.

We prioritize the waste hierarchy, emphasizing waste avoidance, reuse of packaging materials, and recycling before disposal. We categorize our waste as follows:

废弃物管理与循环性

为了维护生态平衡并将环境影响降至最低，克莱伯格橡胶(苏州)实施了一套全面的废弃物控制与管理体系统(见图表9)。该体系明确了各部门在废弃物收集、分类、临时储存和最终处置过程中的具体职责。通过定期培训，我们不断提升固体和液体废弃物的管理水平，全面践行资源优化和循环经济的核心理念。

我们优先遵循废弃物管理层级原则，强调在废弃物处置前进行废弃物的避免、包装材料的再利用和回收。我们的废弃物分类如下：

Waste Classification 废物分类	Definition 定义	Waste Name 废物名称	Disposal Method 处理方法
Production Waste 生产废料	Waste generated directly from the manufacturing process 直接从制造过程中产生的废料。	Off-cuts, rubber scrap, defective products, and any other waste material that arises from the production line 剪切废料、橡胶废料、次品及生产线产生的任何其他废料。	Pay municipal waste disposals, certified third parties 支付市政废物处理费用，认证的第三方
General Waste 一般废料	Waste generated from everyday activities by employees in office spaces, workshops, or other non-production areas 员工在办公室、车间或其他非生产区域的日常活动中产生的废料。	Prints, household waste 打印资料、生活垃圾	Pay municipal waste disposals, certified third parties 支付市政废物处理费用，认证的第三方
Recyclable & Reused Waste 可回收及再利用 废料	Waste materials that can be processed and used again & waste materials that are repurposed or used again without processing 可以处理并再次使用的废料及无需处理即可重新利用的废料。	Bottles and cans, papers and cardboards, plastics, electrical devices, waste rubber from production and laboratory, wooden pallets, waste metals 瓶罐、纸张、纸板、塑料、电器设备、生产及实验室产生的废橡胶、木制托盘、废金属	Pay municipal waste disposals 支付市政废物处理费用
Hazardous Waste 危险废物	Waste that poses substantial or potential threats to public health or the environment 对公共健康或环境构成重大或潜在威胁的废物。	Waste packaging materials, waste plasticizer, waste release agent and contaminated water after cleaning, empty chemical drums and barrels, chemical contaminated rags/gloves/oil-absorbent cottons, waste grease machine oil, waste activated carbon, chemical dust collected by dust collectors, waste filter cotton 废包装材料、废增塑剂、废脱模剂及清洗后的污水、空化学桶和桶、受化学品污染的抹布/手套/吸油棉、废润滑油、废活性炭、除尘器收集的化学粉尘、废过滤棉	Pay certified third parties 支付认证的第三方
Canteen waste 食堂废料	Waste generated from food preparation and consumption in canteen facilities. This includes organic and non-organic waste 食堂设施中食品准备及消费产生的废物，包括有机及无机废物。	Kitchen & Food waste 厨余及食品废料	Catering service companies 餐饮服务公司

Figure 8: Waste Management Procedures | 图表8:废弃物管控程序

Production waste

Production waste is our major waste source. In 2023 we had 124 tons of production waste. The total production output was about 4,134 tons in 2023. The recyclable waste from production was 56 tons accounting for 1.35% of total production output. The total hazardous waste was 41 tons which is about 0.99% and the total other production waste is 0.65% of the total production output in 2023 (see Figure 10).

生产废弃物

生产废弃物是我们主要的废弃物来源。2023年，我们的生产废弃物总量为124吨，总生产量约为4,134吨。其中，可回收废弃物为56吨，占总生产量的1.35%；危险废弃物总量为41吨，占总生产量的约0.99%；其余生产废弃物占总生产量的0.65%（见图表10）。

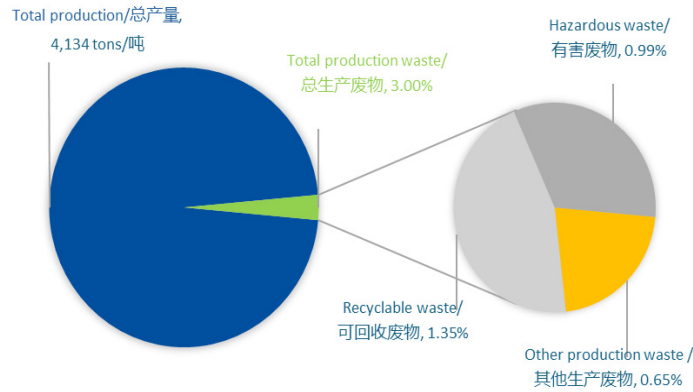


Figure 9: 2023 Total Production Output vs Waster | 图表9:2023年总产量与废弃物对比

Based on the waste treatment methods, 37 tons of waste were incinerated, 56 tons were recycled and 31 tons were reusable. These data is different based on the waste classification. 10 tons of hazardous production waste got incinerated.

根据废弃物处理方式，37吨废弃物被焚烧，56吨被回收，31吨被重复利用。按废弃物分类统计，其中包括10吨危险生产废弃物通过焚烧方式处理。

Currently there is no biological raw material from certificated source, but as long-term target certificated natural rubber will be part of the supply chain to support a sustainable management of natural rubber plantations. For existing compound formulations currently no reusable or recycled raw materials are in use but will be considered for new compound formulations developed by KRAIBURG Rubber (Suzhou).

目前，我们尚未使用来自认证来源的生物原材料。然而，作为长期目标，克莱伯格橡胶（苏州）计划将认证的天然橡胶纳入供应链，以支持天然橡胶种植园的可持续管理。在现有化合物配方中，尚未采用可重复利用或回收的原材料，但我们将在新开发的产品配方中积极探索和考虑使用此类材料。

Categories 分类	Based on waste definition 基于废物定义		Based on waste treatment 基于废物处理		
	Tons 吨	%	%	Tons 吨	Methods 方法
Other Production waste 其他生产废物	27	21.77%	29.84%	37	Incineration 焚烧
Recyclable waste 可回收废物	56	45.16%	45.16%	56	Recyclable 危险废物
Hazardous waste 危险废物	41	33.06%	25.00%	31	Reusable 可重复使用

Figure 10: Data on Waste Definition and Treatment | 图表10:基于废弃物定义和处理方法的统计

General waste generated by office usage is disposed 3 times a week by emptying 6x 240 l garbage bins by the municipal waste disposals considering a fixed monthly payment. The municipal waste is incinerated by Loufeng Sanitation Station. Kitchen & food waste is collected by Suzhou Fengcheng Catering company. 4,000 dishes each month generate approx. 750 kg of waste which is sent to a third-party, Lukong Environmental (Suzhou) Co., Ltd. for kitchen & food waste disposal. Production waste is collected by Bingwen Renewable Resources Co., Ltd. for disposal by incineration.

The Hazardous waste total quantity in 2023 was 41 tons accounting for about 31% of all waste. Hazardous waste is reusable but in most of the cases it is not and will cause great damage to the environment. We manage hazardous waste responsibly, following strict regulations and utilizing certified third-party services for disposal.

From 2021, we have achieved an average annual reduction of 22% in hazardous waste generation (from 67.67 tons in 2021 to 41.09 tons in 2023) , thanks to a more accurate and transparent waste management system (see Figure 12).

办公废弃物通过固定月付安排,由市政废弃物处理部门每周清理3次,清空6个240升垃圾桶。市政废弃物由娄丰环卫站焚烧处理。厨房和食品废弃物由苏州丰成餐饮公司收集。每月约4,000份餐食产生约750公斤的废弃物,这些废弃物由第三方苏州绿控环境科技有限公司处理。生产废弃物由炳文再生资源有限公司收集,焚烧处理。

2023年, **危险废弃物**总量为41吨, 占有所有废弃物的约31%。尽管危险废弃物在某些情况下可以重复使用,但大多数情况下无法回收,并对环境具有显著危害。我们以负责任的方式管理危险废弃物,严格遵守相关法规,并委托经过认证的第三方服务机构进行妥善处理。

自2021年以来,得益于更加精确和透明的废弃物管理系统,我们在危险废弃物产生量方面实现了平均每年22%的减少(从2021年的67.67吨至2023年的41.09吨——见图表12)。

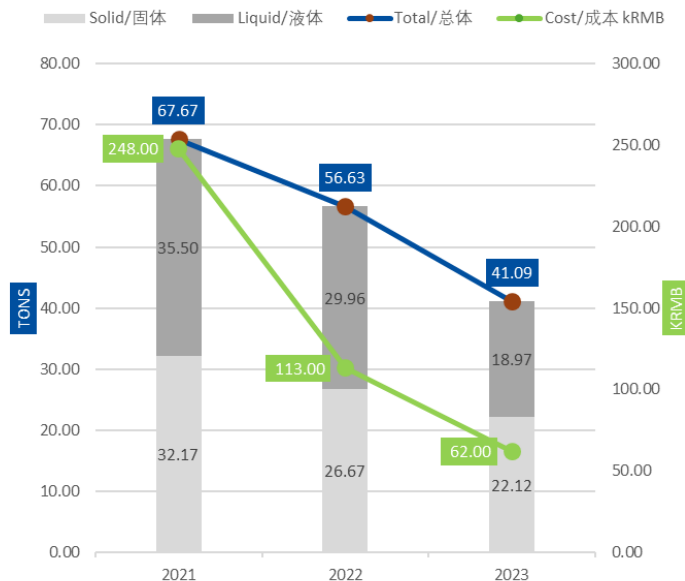


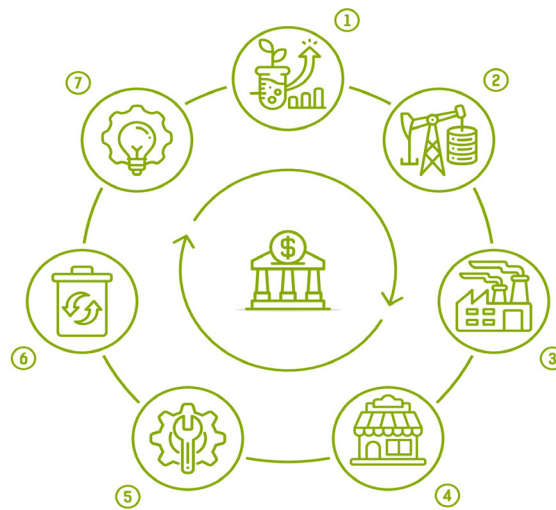
Figure 11: Total Hazardous Waste Disposal & Cost | 图表11: 危险废弃物总处置量及成本



The recyclable & reused waste is handled by a third-party company, Bingwen Renewable Resources Co., Ltd. In 2023, 87 tons of waste were handled (56 tons were recycled and 31 tons were reusable), generating an income of over RMB57,000. The different kinds of recyclable wastes are collected, separated, cleaned, pressed and transferred to related recycling plants.

可回收和可重复使用的废弃物由第三方公司炳文再生资源有限公司处理。2023年，共处理废弃物87吨，其中56吨被回收，31吨被重复使用，为公司带来了超过人民币57,000的收入。不同类型的可回收废弃物在被收集后，会经过分类、清洗和压缩处理，再转移至相关的回收工厂进行进一步处理。

ECONOMIC CIRCLE



Resource Efficiency

- **Energy Conservation Initiatives:** We prioritize energy conservation through the use of sensor-controlled lighting, insulating glass systems, and solar roof installations.
- **Supply Chain Collaboration:** We engage closely with our suppliers and customers to promote sustainable sourcing practices, including the use of recycled materials and the reduction of packaging waste. For this purpose KRAIBURG Rubber (Suzhou) has introduced its own Supplier Manual.

资源效率

- **节能举措:** 我们通过采用传感器控制的智能照明、安装隔热玻璃系统以及建设太阳能屋顶，积极推动节能优先策略。
- **供应链合作:** 我们与供应商和客户紧密协作，推动可持续采购实践，重点包括使用回收材料和减少包装废弃物。为支持这一目标，克莱伯格橡胶（苏州）制定并推出了专属的供应商手册。

Waste Management 废弃物管理

Commitment to Continuous Improvement

KRAIBURG Rubber is committed to continuous improvement in our resource use and circular economy practices. We believe that by embracing circularity, we can contribute to a more sustainable future while ensuring the long-term availability of resources for our business and society.

Energy Efficiency Improvements

- Continuously upgrade or exchange machinery and production processes to improve energy efficiency.
- Additional investments to produce green energy.
- Implement smart data analyze tools and additional measurement sensors for improved data collection, evaluation and detection of further energy saving potentials.

To support the transition to a circular economy, we implement resource efficiency practices across our operations. Our focus on sustainable materials, recycling initiatives, and responsible resource use minimizes waste and supports long-term environmental goals. We are exploring options to incorporate certified natural rubber into our supply chain as a future step toward sustainable sourcing.

持续改进的承诺

克莱伯格橡胶始终致力于在资源利用和循环经济实践方面持续优化。我们坚信,通过践行循环经济理念,不仅能为更加可持续的未来贡献力量,还能确保业务和社会的长期资源供应。

能效改进

- 持续升级或更换机械设备和生产工艺,以提升能源效率。
- 增加投资以扩大绿色能源的生产。
- 引入智能数据分析工具和额外的测量传感器,优化数据收集与评估,并挖掘更多节能潜力。

Circular Economy Initiatives 循环经济倡议

为支持向循环经济的转型,我们在运营中积极实施资源高效利用实践。通过专注于可持续材料、回收计划和负责任的资源使用,我们努力将废弃物降至最低,同时推动长期环境目标的实现。作为实现可持续采购的重要举措之一,我们正在探索将认证天然橡胶引入供应链的可行性。

KRAIBURG is committed to responsible climate action, integrating the principles of the ESRS E1 Climate Change standard throughout its operations. This commitment is reflected in our ongoing efforts to reduce greenhouse gas (GHG) emissions, enhance energy efficiency, and adopt sustainable practices across our value chain.

Our Main Objectives

- **GHG Emissions Reduction:** We strive to minimize our direct (Scope 1), indirect (Scope 2), and Scope 3 emissions by implementing energy-efficient processes and transitioning to renewable energy sources where feasible. Our GHG calculations are based on the total kilograms of produced unvulcanized rubber, packed at the factory gate; cradle-to-gate. Currently, we report Scope 3 emissions from upstream activities and plan to expand to downstream emissions by 2025.
- **Energy Efficiency and Renewable Energy Use:** In line with ESRS E1 standards, we prioritize energy conservation. Measures such as sensor-controlled lighting, insulating glass installations, and solar roof systems help us reduce energy consumption and contribute to our resilience strategy in alignment with China's national climate goals, targeting CO² peak before 2030 and carbon neutrality before 2060.
- **Emission reporting:** In addition to Scope 1 and Scope 2, we report Scope 3 emissions for upstream activities, totaling 5,993 tCO₂e for 2023. We aim to include downstream emissions, such as the use and disposal of sold products, by 2025 to further enhance our sustainability disclosures.

克莱伯格致力于采取负责任的气候行动，将ESRS-E1气候变化标准的原则全面融入运营的各个环节。这一承诺贯穿于我们减少温室气体(GHG)排放、提升能源效率以及在整个价值链中推动可持续实践的持续努力中。

我们的主要目标

- **温室气体(GHG)减排:**我们致力于通过实施高效的能源使用流程,并在可行的情况下向可再生能源过渡,最大限度地减少直接(范围1)、间接(范围2)和范围3的排放。我们的温室气体计算基于在工厂交付点包装的未硫化橡胶的总重量-从生产到大门。目前,我们报告上游活动的范围3排放,并计划在2025年前扩展到下游排放。
- **能源效率和可再生能源使用:**根据ESRS-E1标准,我们将能源节约置于优先位置。通过采用传感器控制的智能照明、安装隔热玻璃系统以及建设太阳能屋顶等措施,我们有效降低了能源消耗。这些行动与中国的国家气候目标保持一致,积极支持实现2030年前二氧化碳排放达峰和2060年前碳中和的承诺。
- **排放报告:**除范围1和范围2排放外,我们还报告了上游活动的范围3排放。2023年的总排放量为5,993吨二氧化碳当量(tCO₂e)。为进一步加强我们的可持续性披露,我们计划在2025年前将范围3排放扩展至下游环节,包括产品的使用和处置阶段。



Actions

- 2023:
 1. Upgraded lighting and insulation systems to improve energy efficiency.
 2. Data monitoring enhancements to track emissions and energy consumption accurately.
 3. Expanded renewable energy usage, with a focus on self-generated sources.

Future initiatives

- Ongoing: Collaboration with suppliers on recyclable packaging and sustainable sourcing to reduce upstream Scope 3 emissions.
- 2025: Installation of additional photovoltaic (PV) capacity to generate an estimated 450 MWh of green energy annually and the inclusion of downstream Scope 3 emissions in our reporting scope.

GHG Emissions Management

To mitigate our climate impact, we rigorously track and report GHG emissions. In 2023, the total three scopes emissions were 8,518 tCO₂e. The data from 2021 to 2023 shows significant reductions of annual decrease of 24%, particularly in Scope 2 emissions due to increased renewable energy integration (see Figure 13).

- Scope 1 Emissions: Direct emissions from on-site operations.
- Scope 2 Emissions: Indirect emissions from energy purchased, showing a shift from fossil-based sources toward renewable energy.
- Scope 3 Emissions: All other indirect emissions (not included in Scope 1 and Scope 2) that occur as a result of the company's operations, both upstream and downstream in the value chain.

The company Carbon Footprint is calculated in reference to the GHG Protocol (see Figure 14) and ISO14067:2018.

措施

- 2023年:
 1. 升级照明和隔热系统,进一步提升能源效率。
 2. 增强数据监控能力,精准追踪排放和能源消耗。
 3. 扩大可再生能源的使用,重点推进自主能源生产。

未来行动

- 持续进行中:与供应商密切合作,推动使用可回收包装材料 and 可持续采购实践,以减少上游范围3排放。
- 2025年:安装额外的光伏(PV)容量,预计每年可产生约450兆瓦时的绿色能源;将下游范围3排放纳入我们的报告范围。

温室气体(GHG)排放管理

我们致力于减轻气候影响,通过严格跟踪并报告温室气体排放情况。2023年,我们的范围1、范围2和范围3排放总量为8,518吨二氧化碳当量(tCO₂e)。从2021年至2023年的数据表明,年度排放量显著减少,尤其是范围2排放得益于可再生能源的增加,实现了每年24%的减排率(见图表13)。

- 范围1排放:由现场运营直接产生的排放。
- 范围2排放:购买能源所产生的间接排放,反映了我们从化石能源向可再生能源转型的成果。
- 范围3排放:涵盖公司运营中所有其他间接排放(不包括范围1和范围2),涉及整个价值链中的上游和下游排放。

公司的碳足迹是依据温室气体核算议定书(见图表14)和ISO 14067:2018标准计算的。



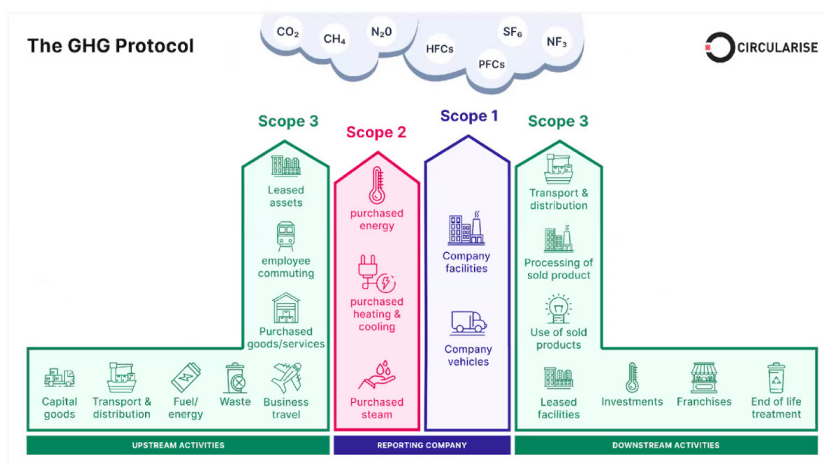
Year 年份	Scope 1 Gross GHG Emissions (tCO2e) 范畴 1 温室气体总排放量	Location-based Scope 2 Emissions (tCO2e) 基于位置的范畴 2 排放	Upstream Scope 3 Gross GHG Emissions (tCO2e) 上游范畴 3 温室气体总排放	Total GHG Emissions (tCO2e) 温室气体总排放量
2021	30	4,237	-	4,267
2022	36	3,217	-	3,254
2023	73	2,452	5,993	8,518

Figure 12: GHG Emission Data | 图表12: 温室气体排放数据

Note: Due to the absence of market-based data from the state grid in China, we rely solely on location-based emissions data, calculated based on average energy mix data available online.

注: 由于中国国家电网缺乏市场基础数据, 我们只能依赖基于位置的排放数据, 计算方法基于公开可获取的平均能源结构数据。

GHG Protocol: Scope 1, 2, 3 in detail



Source: National Grid Group

24

Figure 13: GHG Protocol | 图表13: 温室气体核算协议

Energy Consumption and Mix

KRAIBURG closely monitors its energy use by source (see Figure 15), as required by ESRS E1. Although we do not have influence over the national energy mix in China, we focus on self-generated renewable energy to reduce our dependency on fossil sources.

能源消耗与结构

克萊伯格严格按照ESRS-E1的要求, 密切监测能源使用来源(见图表15)。虽然无法直接影响中国的国家能源结构, 但我们专注于发展自主可再生能源, 以降低对化石能源的依赖。

Year 年份	Total Fossil Energy 化石能源 (MWh)	Nuclear Energy 核能 (MWh)	Renewable Energy 可再生能源 (MWh)	Total Energy 总能源(MWh)	Renewable Share (%) 可再生能源占比
2021	5,958	255	863	7,075	12%
2022	4,624	198	706	5,528	13%
2023	3,545	152	1,017	4,714	22%

Figure 14: Energy Mix | 图表14: 能源组合

Our renewable energy consumption increased from 12% in 2021 to 22% in 2023, mainly due to solar installations (see Figure 16). We aim to further expand this with additional PV capacity by 2025, projected to provide 450 MWh of green energy annually.

我们的可再生能源消费比例已从2021年的12%提升至2023年的22%，这主要归功于太阳能设施的安装（见图表16）。我们计划在2025年前进一步提高这一比例，新增光伏(PV)设备，预计每年可产生450兆瓦时的绿色能源。

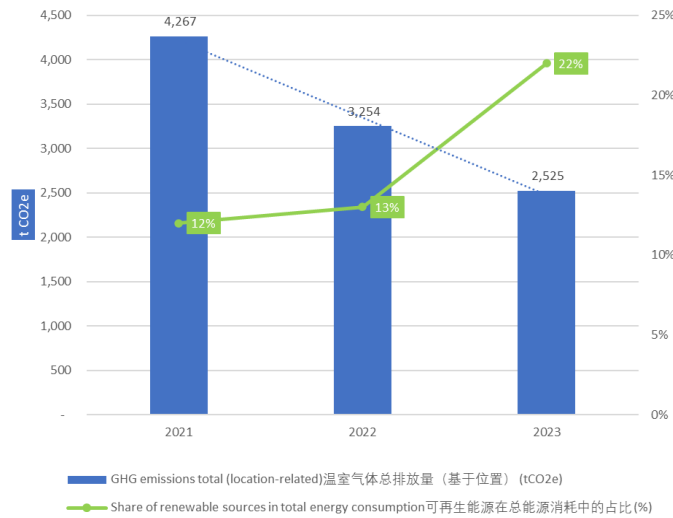


Figure 15: Emissions Reduction (GHG SCOPE 1+2) & Renewable Energy Share (2021-2023)
图表15: 温室气体减排(温室气体范围1+2)与可再生能源占比(2021-2023)

Climate Adaptation Policies and Targets

Our policies are designed to address both climate change mitigation and adaptation:

- Mitigation Policies: Focus on reducing GHG emissions across all operations, particularly in production processes and energy consumption.
- Adaptation Policies: Include climate resilience measures such as infrastructure upgrades to handle fluctuating energy demands and alignment with China's climate strategy for long-term sustainability goals.

气候适应政策和目标

我们的政策旨在积极应对气候变化，通过减缓和适应措施推动可持续发展：

- 减缓政策：聚焦于降低运营各环节的温室气体(GHG)排放，特别是在生产流程和能源消耗方面，最大限度减少碳足迹。
- 适应政策：实施气候韧性措施，包括升级基础设施以应对能源需求的波动，同时与中国的气候战略保持一致，助力实现长期可持续发展目标。

Commitment to Continuous Improvement

KRAIBURG is dedicated to continuous improvement in climate management practices. By expanding our data scope to include downstream Scope 3 emissions by 2025, setting ambitious targets, and strengthening our renewable energy capacity, we aim to lead in responsible climate action, aligned with both ESRS E1 standards requirements for comprehensive sustainability performance.

持续改进的承诺

克莱伯格致力于持续改进气候管理实践。通过在2025年前扩展数据范围以覆盖下游范围3排放，设定具有挑战性的目标，并提升可再生能源能力，我们力求在负责任的气候行动中发挥引领作用，全面符合ESRS-E1标准对可持续表现的要求。

Social Responsibility

社会责任

Workforce Management 劳动力管理

Own Workforce Management and Sustainability Practices

KRAIBURG Rubber (Suzhou) is committed to creating a sustainable, safe, and ethical workplace. Our workforce strategy integrates initiatives across labor relations, diversity, safety, ethics, and human rights, ensuring compliance with ESRS S1 Own Workforce standards. This chapter outlines our objectives, actions, metrics, and milestones to foster a responsible work environment.

Objectives

- **Labor Relations and Employee Engagement:** Foster open communication and a collaborative culture by engaging employee representatives in regular discussions on workplace conditions and employment terms.
- **Prevention of Child Labor, Forced Labor, and Human Trafficking:** Enforce strict policies to prevent any form of child labor or forced labor, with regular supplier audits and compliance monitoring.
- **Conflict of Interest:** Ensure transparent decision-making by maintaining high standards of ethical conduct and requiring Conflict of Interest declarations from all employees.
- **Diversity, Equity, and Inclusion (DEI):** Promote an inclusive workplace where diversity is valued, and all employees have equal opportunities free from discrimination or harassment.
- **Employee Health and Safety:** Protect employee well-being through rigorous health and safety protocols, including regular assessments, training, and risk management.
- **Working Conditions:** Enhance employee satisfaction by offering work-life balance options, competitive compensation, and fair employment practices.
- **Whistleblower Mechanisms:** Maintain confidential reporting channels, allowing employees to report without fear of retaliation.

自有劳动力管理与可持续实践

克萊伯格橡膠(蘇州)致力於建設可持續、安全且符合道德標準的工作場所。我們的勞動力戰略涵蓋勞工關係、多元化、安全管理、商業倫理以及人權等方面的舉措，確保符合ESRS-S1自有勞動力標準。本章節將概述我們在創建負責任工作環境方面的目標、行動計劃、關鍵指標和重要里程碑。

目標

- **勞資關係與員工參與:**通過定期與員工代表討論工作條件和僱傭條款，營造開放的溝通環境，促進協作文化。
- **防止童工、強迫勞動和人口販運:**實施嚴格的政策，杜絕任何形式的童工或強迫勞動，並對供應商進行定期審計和合規監控。
- **利益衝突:**堅持高標準的道德行為，要求所有員工申報潛在利益衝突，確保決策透明公正。
- **多樣性、公平性與包容性 (DEI):**推動多元化的工作環境，尊重多樣性，為所有員工提供平等機會，堅決杜絕歧視和騷擾行為。
- **員工健康與安全:**通過嚴格執行健康與安全規程，包括定期評估、培訓和風險管理，確保員工的安全和福祉。
- **工作條件:**提供工作與生活平衡的選項，制定具有競爭力的薪酬政策和公平的僱傭實踐，以提升員工滿意度。
- **舉報機制:**提供保密的報告渠道，確保員工能夠在無懼報復的情況下安全報告問題。



Future initiatives

- 2024: Setting up policies and annual survey related to Labor Relations and Employee Engagement, Prevention of Child Labor, Forced Labor, and Human Trafficking, Conflict of Interest, Diversity, Equity, and Inclusion (DEI) Policy and Anti-Discrimination Measures, Employee Health and Safety and Other Actions to Ensure Good Working Conditions.
- 2025: Complete 100% training of the above new policies.

Commitment to Continuous Improvement

We are dedicated to elevating our workforce practices through regular monitoring and improvements in line with ESRS requirements. By setting annual goals across labor relations, ethical conduct, and working conditions, diversity and prevent child and forced labor and so on, KRAIBURG Rubber (Suzhou) aims to support sustainable and ethical growth, benefiting both employees and the wider community (see Figure 17).

未来行动

- 2024年:制定涵盖以下领域的政策,并开展年度调查:劳动关系与员工参与、防止童工、强迫劳动和人口贩运、利益冲突、多样性、公平性与包容性(DEI)政策及反歧视措施、员工健康与安全,以及其他旨在确保良好工作条件的具体行动。
- 2025年:实现对上述新政策的全员培训覆盖率达到100%。

持续改进的承诺

我们致力于通过定期监测与持续改进,按照ESRS要求不断优化劳动力管理实践。克莱伯格橡胶(苏州)通过在劳资关系、道德行为、工作条件、多样性以及防止童工和强迫劳动等领域设定年度目标,推动可持续与道德发展的实现,造福员工及更广泛的社区(见图表17)。

Category 类别	Metric 指标	2021	2022	2023	2025 Target (2025 目标)
Employee Structure 员工结构	Number of employees 员工总数	160	153	151	—
	Number of female employees 女性员工数量	42	40	37	—
	Number of disabled employees 残疾员工数量	0	0	1	—
	Number of minority group employees 少数群体员工数量	1	1	1	—
	% of women at top management level 高级管理层女性占比	50%	50%	50%	45%
Diversity, Equity and Inclusion 多样性、公平性与包容性	DEI training completion 多样性培训完成率	—	—	—	100%
	Employees Health and Safety 员工健康与安全	Safety training completion 安全培训完成率	100%	100%	100%
Health check participation rate 健康检查参与率		95%	94%	92%	94%
Number of incidents reported 报告的事件数量		0	0	0	0
Employee lost time injury 员工工时损失受伤次数		0	0	0	0
	Work-related injury rate (工作相关受伤率)	0	0	0	0
Ethics and Transparency 道德与透明性	Conflict of Interest declaration compliance 利益冲突声明合规率	—	—	—	100% sign 100%签署
	Discrimination/harassment incidents reported and resolved 歧视/骚扰事件报告和解决数量	0	0	0	All addressed = 30 days 所有事件在 30 天内解决
	Whistleblower mechanisms 举报机制	—	—	—	100% resolved = timeline 100%按时解决
Employee Engagement 员工参与	Worker's council engagement & communication 工会参与和沟通	70%	75%	80%	85%

Figure 16: Performance Metrics & Targets | 图表16: 绩效指标与目标

Social Responsibility 社会责任

Community Engagement 社区参与

We actively engage with local communities to promote education, support environmental initiatives, and contribute to social well-being. Through partnerships with local organizations, we support projects that have a lasting impact on the communities in which we operate. Our goal is to increase community outreach programs by 2025, further embedding social responsibility in our corporate culture.

我们积极与当地社区互动,致力于推动教育、支持环保倡议并促进社会福祉。通过与本地组织的合作,我们专注于支持能够为运营社区带来长期积极影响的项目。我们的目标是在2025年前扩展社区外展项目,将社会责任深度融入企业文化。



Suzhou Industrial Park Environmental Protection Parent-Child Sports Day 苏州工业园区环保亲子运动会



Suzhou Industrial Park Plogging Public Welfare Activity 苏州工业园区“束口袋”公益活动



Suzhou Olympic Sports Center Sports Activities 苏州奥林匹克体育中心体育活动



Workers Council Reading Activity 员工工会阅读活动



Economic 经济责任

Ethical Business Practice 道德商业实践

Transparency, integrity, and compliance are fundamental to our economic responsibility. We maintain strict policies against corruption and bribery, with regular training to reinforce these standards. This ethical framework allows us to foster trust with customers and partners, ensuring sustainable economic growth.

Core Principles

- Anti-Corruption and Bribery
 1. Strictly prohibit bribery and corruption in all forms.
 2. Business-related benefits must comply with predefined thresholds and receive prior approval if exceeding limits (e.g., €50).
 3. Mandatory training reinforces awareness and ensures compliance.
- Fair Competition and Antitrust Compliance
 1. Adhere to international antitrust laws to maintain fair market competition.
 2. Prohibit practices like price-fixing, market partitioning, and bid rigging.
 3. Regular audits and training help prevent antitrust violations.
- Human Rights and Labor Standards
 1. Zero tolerance for forced labor, child labor, and human trafficking in our operations and supply chain.
 2. Uphold workers' rights, including freedom of association and compliance with wage laws.
- Environmental Responsibility in Business Ethics
 1. Integrate sustainable practices in decision-making and minimize the environmental impact of our operations.
 2. Collaborate with suppliers to enforce ecological standards and enhance resource efficiency.

透明性、诚信和合规性构成了我们履行经济责任的基石。我们严格实施反腐败和反贿赂政策，并通过定期培训强化这些标准。这样的道德框架帮助我们与客户和合作伙伴建立信任，推动实现可持续的经济增长。

核心原则

- 反腐败与贿赂
 1. 严禁任何形式的贿赂和腐败行为。
 2. 与业务相关的利益必须控制在预定限额内，如：€50，超出限额需事先审批。
 3. 展培训以提高意识，确保合规性。
- 公平竞争与反垄断合规
 1. 遵守国际反垄断法，维护公平市场竞争环境。
 2. 禁止价格操控、市场划分和串标行为。
 3. 定期开展审计和培训，以预防反垄断违规。
- 人权与劳动标准
 1. 零容忍强迫劳动、童工和人口贩卖，无论是在自身运营中还是供应链内。
 2. 维护劳动者权益，包括结社自由，并严格遵守工资相关法律法规。
- 环境责任与商业道德
 1. 在决策过程中融入可持续实践，最大限度减少运营对环境的影响。
 2. 与供应商合作，共同强化生态标准，提高资源使用效率。

Future Goals & Roadmap 未来目标与路线图

To further our sustainability journey, we have set ambitious targets for the coming years:

- 2025:
 1. Increase recycling rates, enhance community engagement, and expand renewable energy capacity.
 2. Expand Scope 3 emissions reporting to include downstream emissions fully.
- 2026: Introduce certified natural rubber in the supply chain.

为进一步推动我们的可持续发展之旅,我们为未来几年制定了以下雄心勃勃的目标:

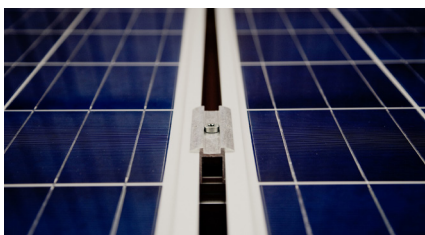
- 2025年:
 1. 提升废弃物回收率,加强社区参与,扩大可再生能源的使用容量。
 2. 扩展范围3排放报告,全面覆盖下游排放。
- 2026年:在供应链中引入认证天然橡胶。

Data & Assurance 数据与保证

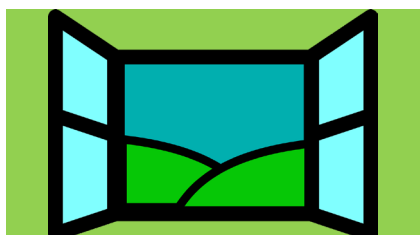
To ensure accuracy and transparency, all data in this report has been gathered using robust data collection methods. In the coming years, we aim to obtain external assurance for our sustainability data to strengthen credibility. We also continuously monitor our progress through improved data governance practices and regular audits.

报告中的数据均通过可靠方法获取,以确保准确性和透明性。未来几年,我们计划为可持续发展数据寻求外部认证,以进一步提升其可信度。同时,我们将通过优化数据治理实践和开展定期审计,持续监测并评估我们的进展。

Sustainability | 可持续发展



Solar Roof
太阳能屋顶



Insulating Windows
隔热窗户



Smart Lighting
智能照明



Machine Upgrading
设备升级



Contact Us | 联系我们

Add. | 地址 No. 166, Suhong East Road
Suzhou Industrial Park, China, 215026
苏州工业园区苏虹东路 166 号

Tel. | 电话 + 86 512-87656080
Fax | 传真 + 86 512-87656022
Email | 邮箱 info@KRAIBURG.cn

KRAIBURG Rubber (Suzhou) Co., Ltd.
克莱伯格橡胶（苏州）有限公司

www.KRAIBURG.cn

